



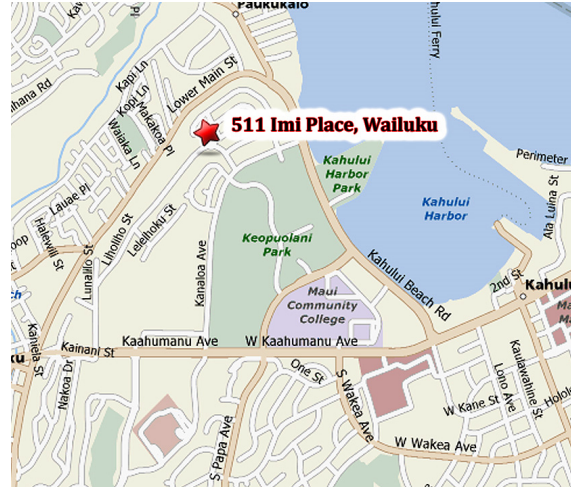
Imi Ikena Apartments

Imi Ikena Apartments provides twenty-eight affordable apartment homes for working families in a convenient location in Wailuku, close to Kahului Public Library and Maui Community College. The community features a picnic area and tot lot, as well as a number of Green features including low-VOC paints, solar hot water, ENERGY STAR appliances and light fixtures.

Twenty-five of the units are reserved for residents who earn at or below 50% AMI, with the remaining 2 rental units set aside for residents who earn at or below 30% AMI as established by the Housing Division, Department of Housing and Human Concerns (HDDC), County of Maui.

The affordable housing development meets goals set out by the Wailuku Redevelopment Plan to improve existing infrastructure, create construction jobs, and improve the curb appeal of the area.

Imi Ikena Apartments



511 Imi Place, Wailuku, HI 96793



Professionally managed by

EAH Housing

1102 Liliha Street, #102
Honolulu, HI 96817
Phone: (808) 439-6286
Fax: (808) 439-6286

www.EAHHousing.org



IMI IKENA APARTMENTS

Wailuku, HI

An Affordable Rental Community



**511 Imi Place,
Wailuku, HI 96793**

808-439-6286

Other Qualifying Criteria

Residents must:

- Have satisfactory credit
- Pass a criminal background check
- Have good landlord references
- Have a minimum gross monthly income of at least 2.5 times the rental amount*

*Section 8 Voucher holders do not need to meet the minimum gross income requirement.



Location

The location of Imi Ikena Apartments brings its residents within close proximity to employment, schools, parks, grocery stores, public transportation, and Keopuolani Recreation Park.

Community Features

- Picnic Area
- Tot lot
- Central location

Apartment Amenities

- Elevator to unit
- In-unit washer and dryer
- Ceiling fans
- Spacious lanai
- All electric appliances
- Garbage disposal

Maximum Household Income Limits *

Imi Ikena Apartments is an affordable housing development serving individuals, families and seniors with incomes between 30% - 50% of the median income limits established by the Housing Division, Department of Housing and Human Concerns (DHHC), County of Maui.

Household Size	Maximum Income 50%	Maximum Income 30%
1 Person	\$33,050	\$19,850
2 Person	\$37,800	\$22,650
3 Person	\$42,500	\$25,500
4 Person	\$47,200	\$28,870
5 Person	\$51,000	\$33,840
6 Person	\$54,800	\$38,810
7 Person	\$58,550	\$43,780

* Rents based on 5/1/2018 HUD limits. Income limits and rent levels are subject to change.

% of AMI	Bdrm Size	Est Sq. Feet	Gross Rent	**Utility Allowance	Rent as of 5/1/2018	# of units
30%	2	885	\$637	\$101	\$536	2
50%	2	1119	\$1,062	\$101	\$961	22
50%	3	1119	\$1,227	\$132	\$1,095	4

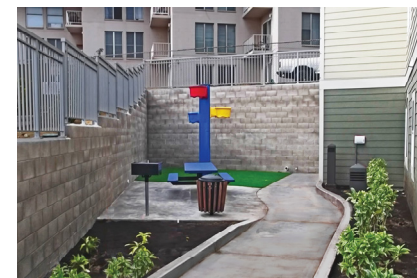
* Rents based on DHHC 5/1/2018 limits. Income limits and rent levels are subject to change.

** Utility allowance based on July 1, 2018 rates and are subject to change.

How to Apply

You can get an application in the following ways:

- Phone/Fax/SMS (808) 439-6286
- Online: www.EAHHousing.org
- In person at the site office:
170 Ho'ohana Street
Kahului, HI 96732
- Office Hours: 8:00am to 3:00pm
- Application Fee: \$30 per adult



For questions regarding the application process or about Imi Ikena Apartments, please call EAH Housing at (808) 439-6286 or visit our website at

www.EAHHousing.org.

Thank You!