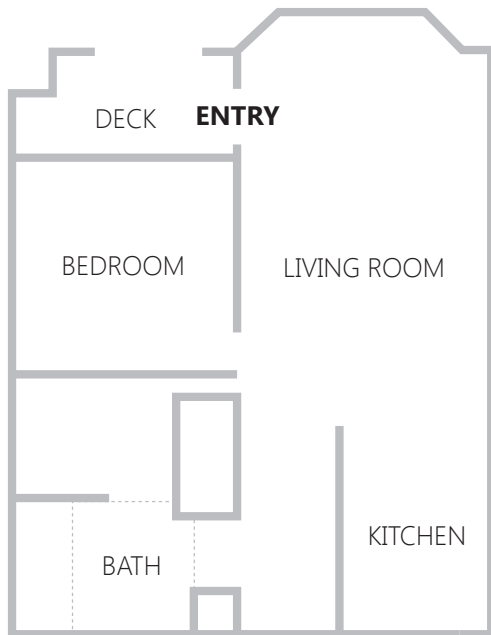


1 Bedroom



MARKET GATEWAY

URBAN LIVING IN SAN JOSE



Market Gateway is centrally located near the SOFA neighborhood of downtown San Jose, CA, with spectacular floorplans and easy neighborhood and freeway access. This apartment community is a mix of one- and two-bedroom flats, townhomes and lofts that provide unique boutique-style contemporary living in an urban oasis for residents.

Market Gateway is close to restaurants, entertainment, museums and public transit (VTA), and is less than a mile from: light rail, The Tech Museum, Camera 12 Theaters, the San Jose Repertory Theatre, breweries, restaurants and many more downtown city attractions!

535 S. Market Street
San Jose, CA 95113
(408) 993-9595



Unit Amenities

- Energy efficient windows, lighting and appliances
- Dishwasher and garbage disposal
- Washer and dryer
- Air conditioning

Community Features

- Gated entry
- Landscaped courtyards
- Fitness room
- Open parking, covered and garage parking available
- Cats and dogs welcome