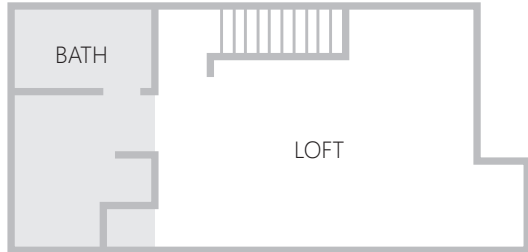


1 Bedroom Loft

MARKET GATEWAY

URBAN LIVING IN SAN JOSE

UPPER FLOOR PLAN



LOWER FLOOR PLAN



* Sample floor plan

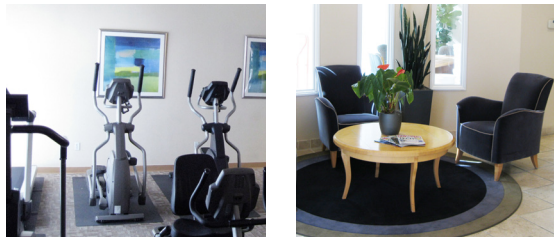


Unit Amenities

- 1 Bedroom, 1 Bathroom Loft
- Energy efficient windows, lighting and appliances
- Dishwasher and garbage disposal
- Washer and dryer
- Air conditioning

Community Features

- Gated entry
- Landscaped courtyards
- Fitness room
- Open parking, covered and garage parking available
- Pet friendly



535 S. Market Street
San Jose, CA 95113
(408) 993-9595



Market Gateway is centrally located near the SOFA neighborhood of downtown San Jose, CA, with spectacular floorplans and easy neighborhood and freeway access. This apartment community is a mix of one- and two-bedroom flats, townhomes and lofts that provide unique boutique-style contemporary living in an urban oasis for residents.

Market Gateway is steps away from restaurants, entertainment, museums and public transit (VTA), and is less than a mile from: light rail, The Tech Museum, Camera 12 Theaters, the San Jose Repertory Theatre, breweries, restaurants and many more downtown city attractions!