

UNIT 1A  
TYPICAL FOR:

107	207	307
108	208	308
109	209	309
110	210	310
111	211	311
112	212	312
	213	313

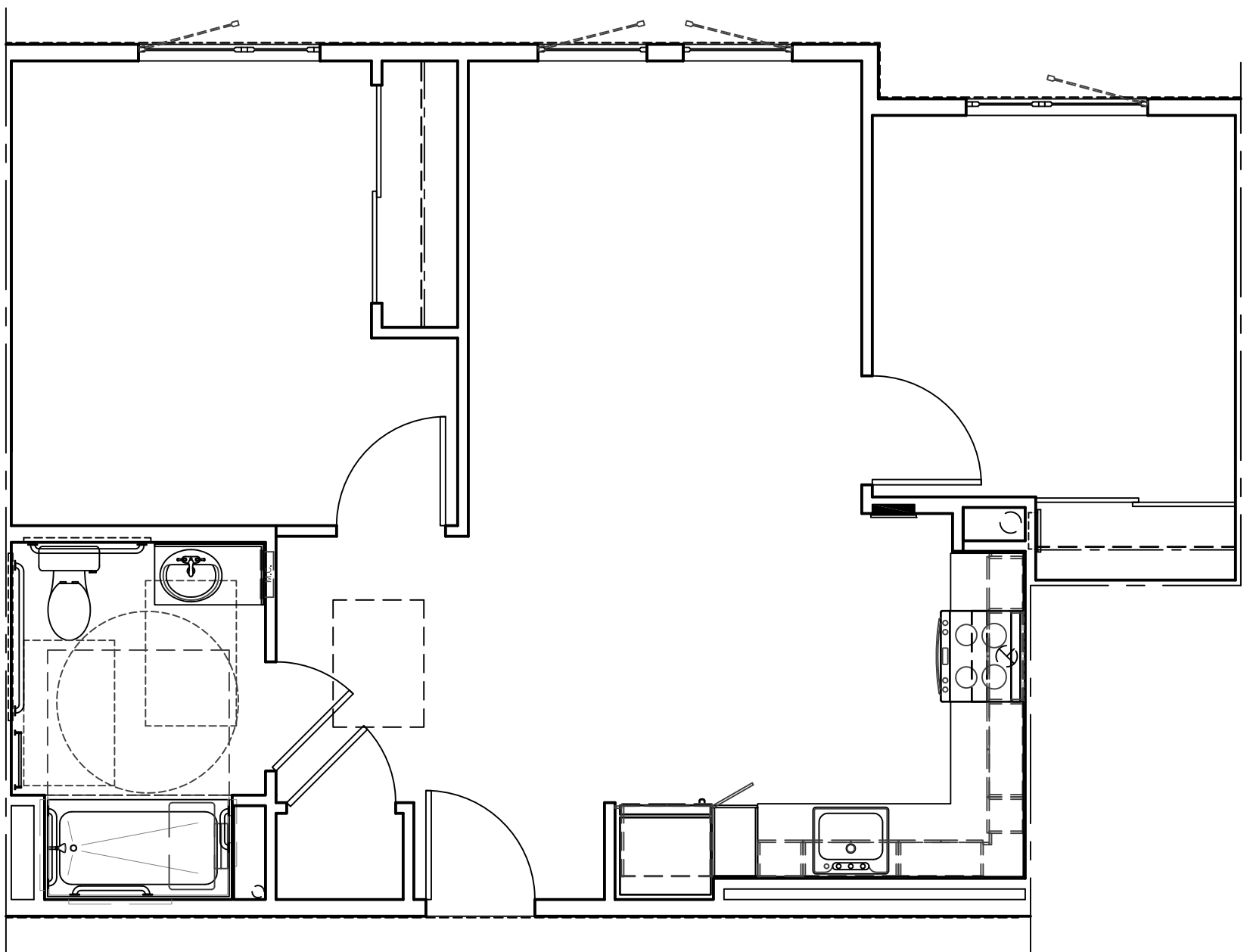
FULLY ACCESSIBLE UNIT  
109, 110, 111, 112, 211,  
212, 213, 311, 312, & 313



PER UNIVERSAL DESIGN REQUIREMENTS

HEARING / VISION IMPAIRED  
UNIT: 210





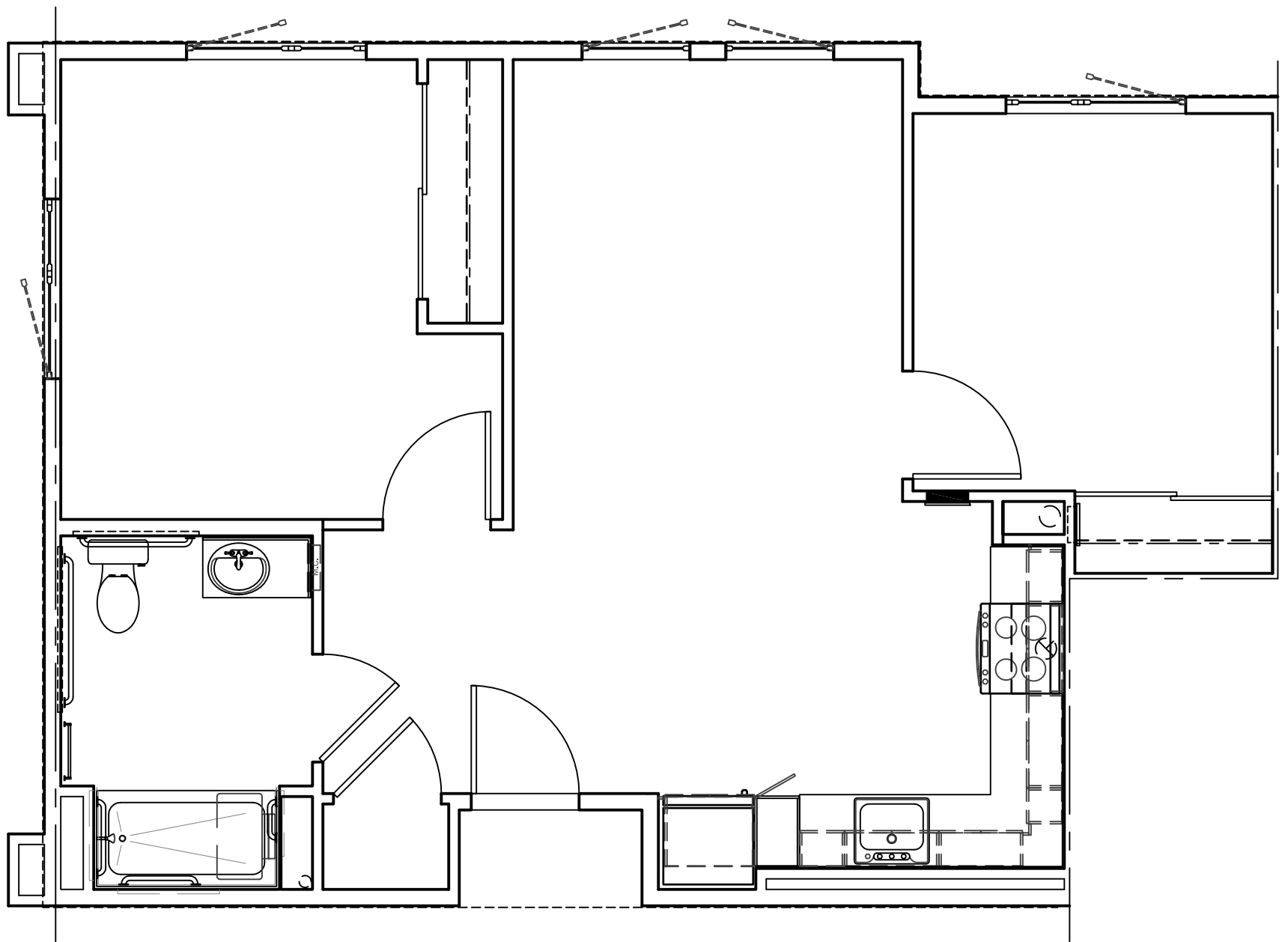
UNIT B1A  
TYPICAL FOR:

101	201	301
102	202	302
104	204	304
	216	


FULLY ACCESSIBLE UNIT  
102, 104, 204, 216,  
302, & 304




PER UNIVERSAL DESIGN REQUIREMENT

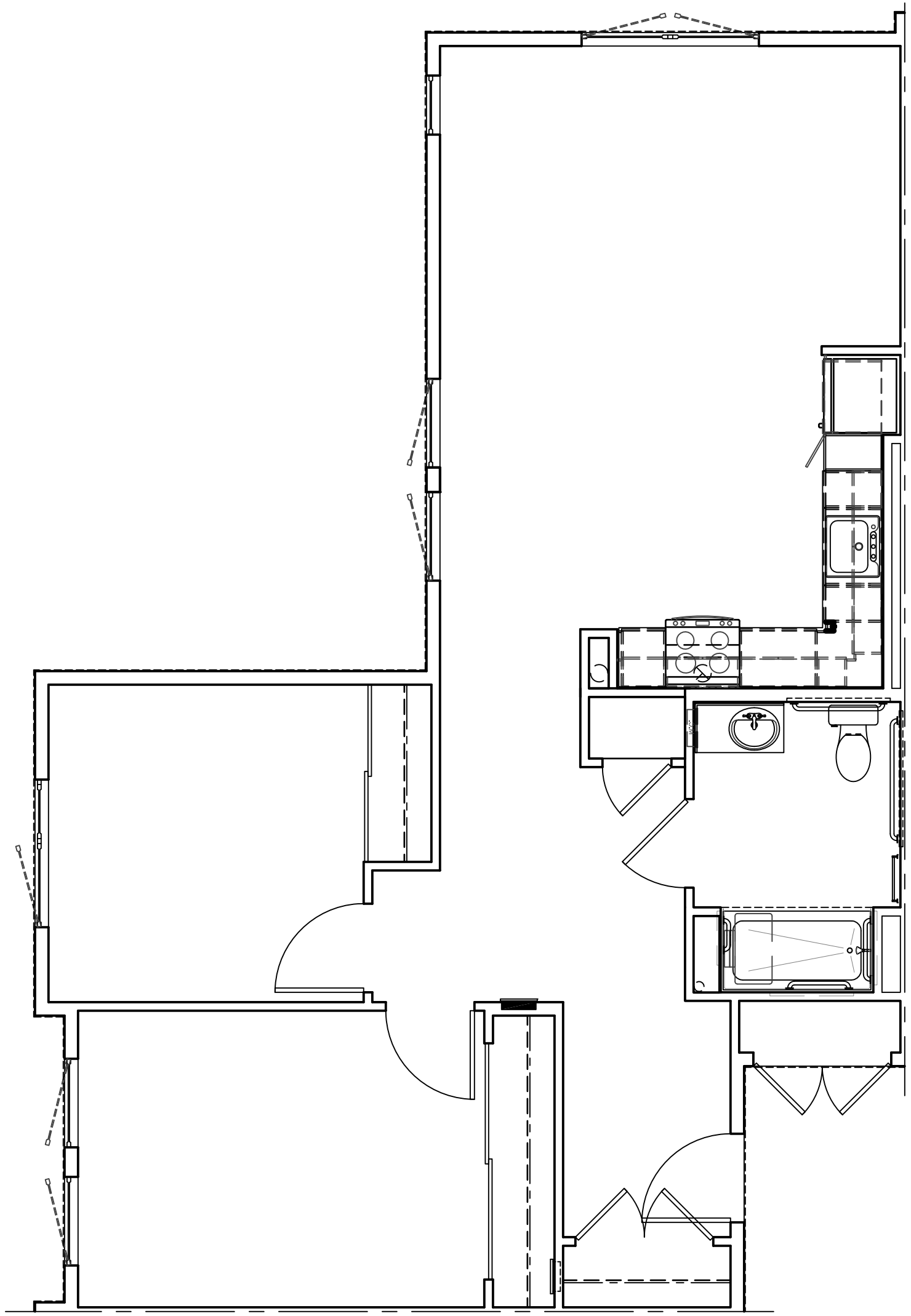


UNIT B1C  
 TYPICAL FOR:  
 215 | 315

FULLY ACCESSIBLE UNIT  
 215 

PER UNIVERSAL DESIGN REQUIREMENT

HEARING / VISION IMPAIRED  
 UNIT: 315 



UNIT B2  
 TYPICAL FOR:  
 206 | 306

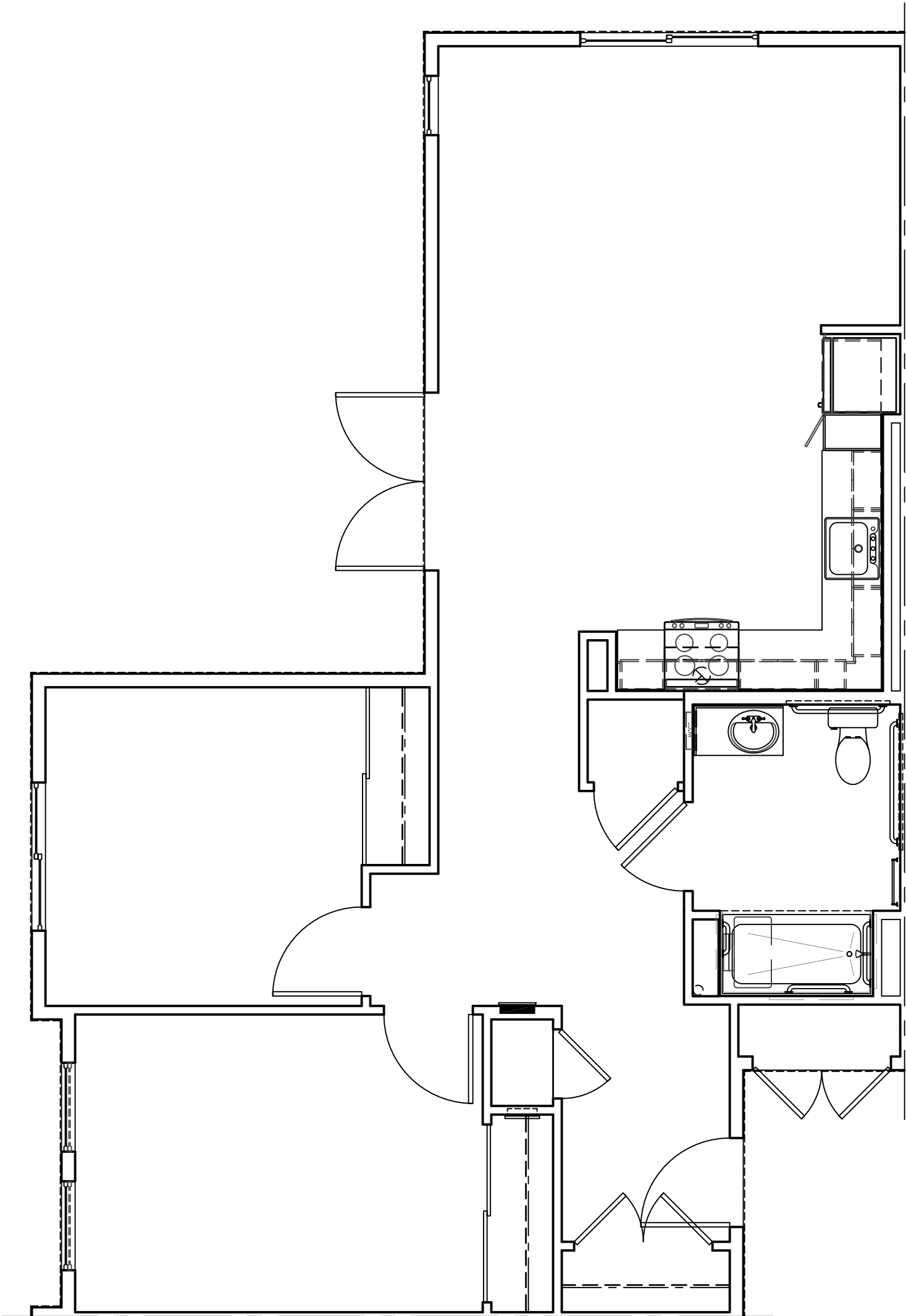
FULLY ACCESSIBLE UNIT  
 206

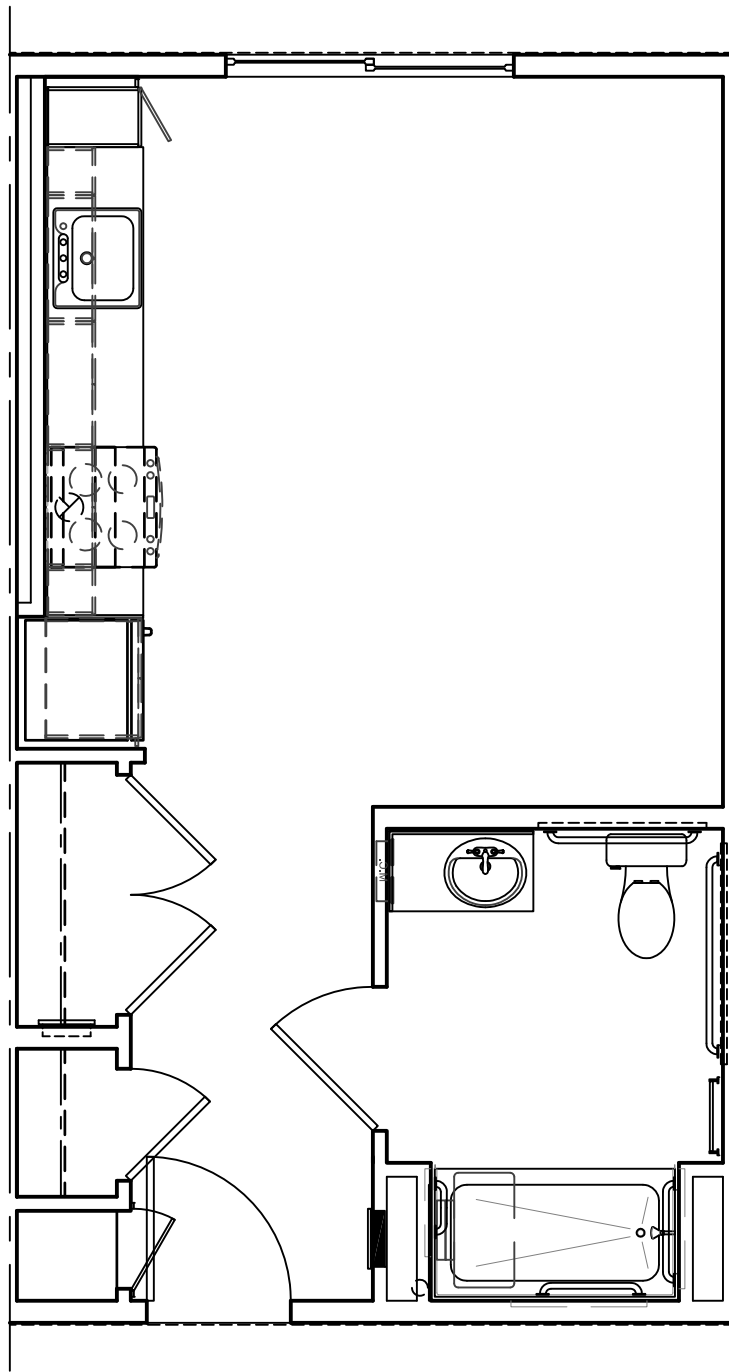


PER UNIVERSAL DESIGN REQUIREMENT


HEARING / VISION IMPAIRED  
 UNIT: 306








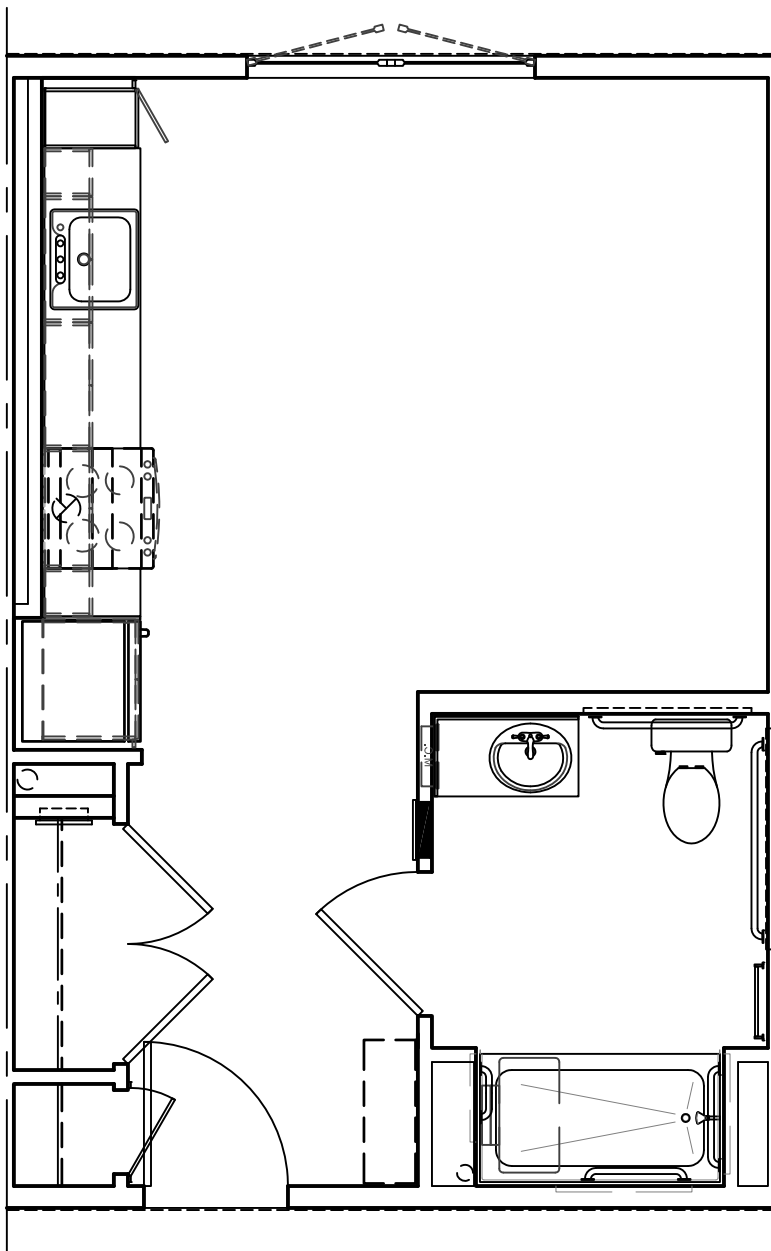
UNIT S2A  
TYPICAL FOR:  
113

FULLY ACCESSIBLE UNIT  
113 

PER UNIVERSAL DESIGN REQUIREMENT

HEARING / VISION IMPAIRED  
UNIT: 113 


SEE SHEET 2/A-421 FOR  
CEILING PLAN



UNIT S1A  
TYPICAL FOR:  
103 | 203 | 303  
105 | 205 | 305  
214 | 314

FULLY ACCESSIBLE UNITS  
105, 214, 303, & 314 

PER UNIVERSAL DESIGN REQUIREMENT

HEARING / VISION IMPAIRED  
UNIT: 305 

SEE SHEET 1/A-421 FOR  
CEILING PLAN