

Nohona Hale

630 Cooke Street
Honolulu, HI 96813

(808) 439-6286
NH-Management@eahhousing.org



Professionally managed by

EAH Housing

HI Lic. RB-16985

CA Lic. 853495

Phone: (808) 439-6286

www.EAHHousing.org



Nohona Hale | 111 units



Centrally located in Kaka'ako, Nohona Hale provides 111 micro-unit rental apartments of approximately 285 sq. ft. each plus a 70 sq. ft. lanai in a mid-rise on Cooke St. Co-developed by Bronx Pro Group and EAH Housing, Nohona Hale is a convenient, amenities-rich community just minutes away from the waterfront, City Hall and Ala Moana.

630 Cooke St., Honolulu, HI 96813

► Information

Nohona Hale provides affordable housing to households earning 60% or less of the area median income (AMI), with 11 units set aside for renters earning 30 percent of the area median income or less.

Do not miss out on this opportunity to rent an affordable apartment in the growing community of Kaka'ako!

| Area Median Income | Unit Size | Sq. Ft.* | Rent** | # of Units |
|--------------------|------------|--------------|---------|------------|
| 60% AMI | Micro-unit | 355* sq. ft. | \$1,054 | 99 |
| 30% AMI | Micro-unit | 355* sq. ft. | \$553 | 11 |

*Includes 70 sq. ft. lanai

**Subject to change



► Amenities

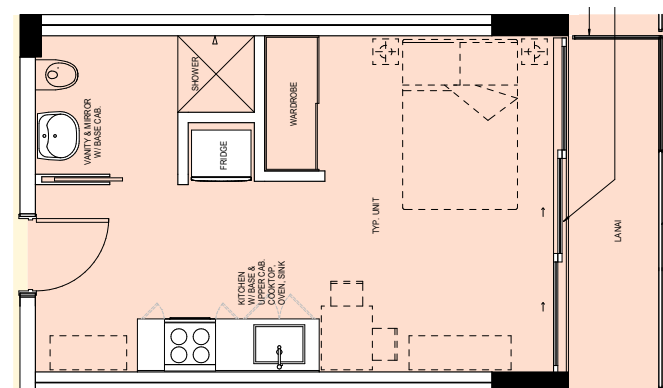
Community Features

- Bicycle/moped/surfboard storage area
- Building elevators
- Community gardens
- Community room/ lounge area
- Fitness room
- Management office
- On-site laundry facilities
- Outdoor lanai
- Secured entry
- Security cameras

Transportation

- TheBus bus line: 6
- Future rail station

Typical Micro-Unit Plan



Apartment Amenities

- Ceiling fan
- Floor to ceiling sliding lanai glass doors
- Lanai
- Luxury vinyl tile flooring
- Low-e insulated windows
- Energy Star® Appliances
- Garbage disposal
- Window coverings
- Cable hook-ups
- Queen size wall bed system with built-in sofa

Green Features

- LED lighting – interior and exterior
- Low-flow water fixtures
- Solar photovoltaic (PV) panels
- Solar thermal (water heating)
- Targeting LEED Gold